

# I Merrill Street

Woburn, Massachusetts



12,258 SF newly renovated two-story office/flex building off I-93



## Description:

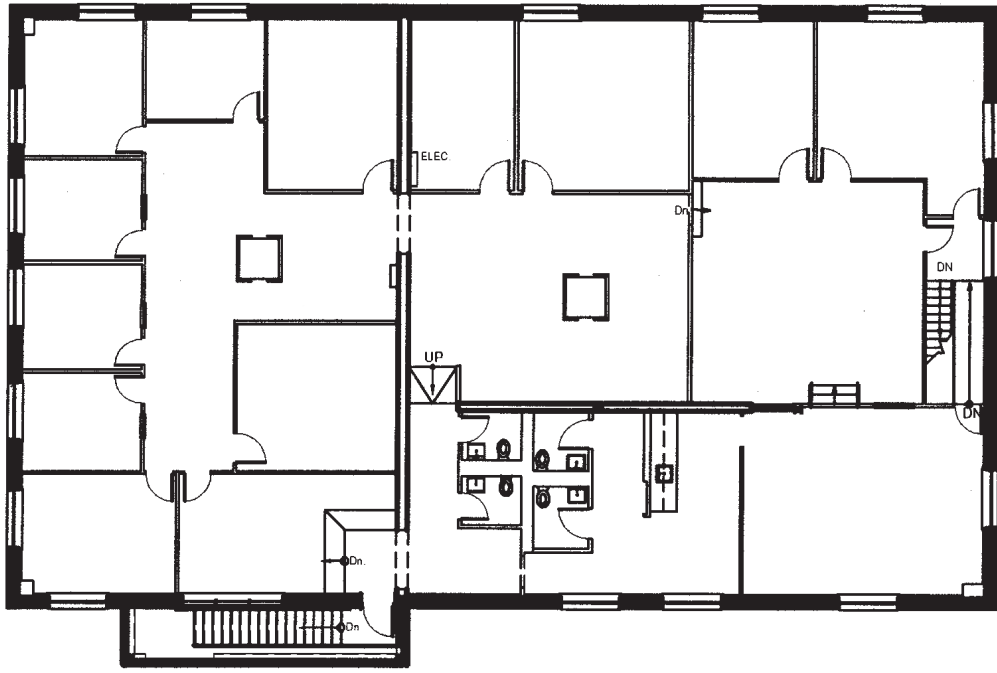
- Loading dock
- Ample free parking
- Full building opportunity
- Two-story glass entry lobby
- 200 Amp electric service
- Attractive, fully renovated building

## Location:

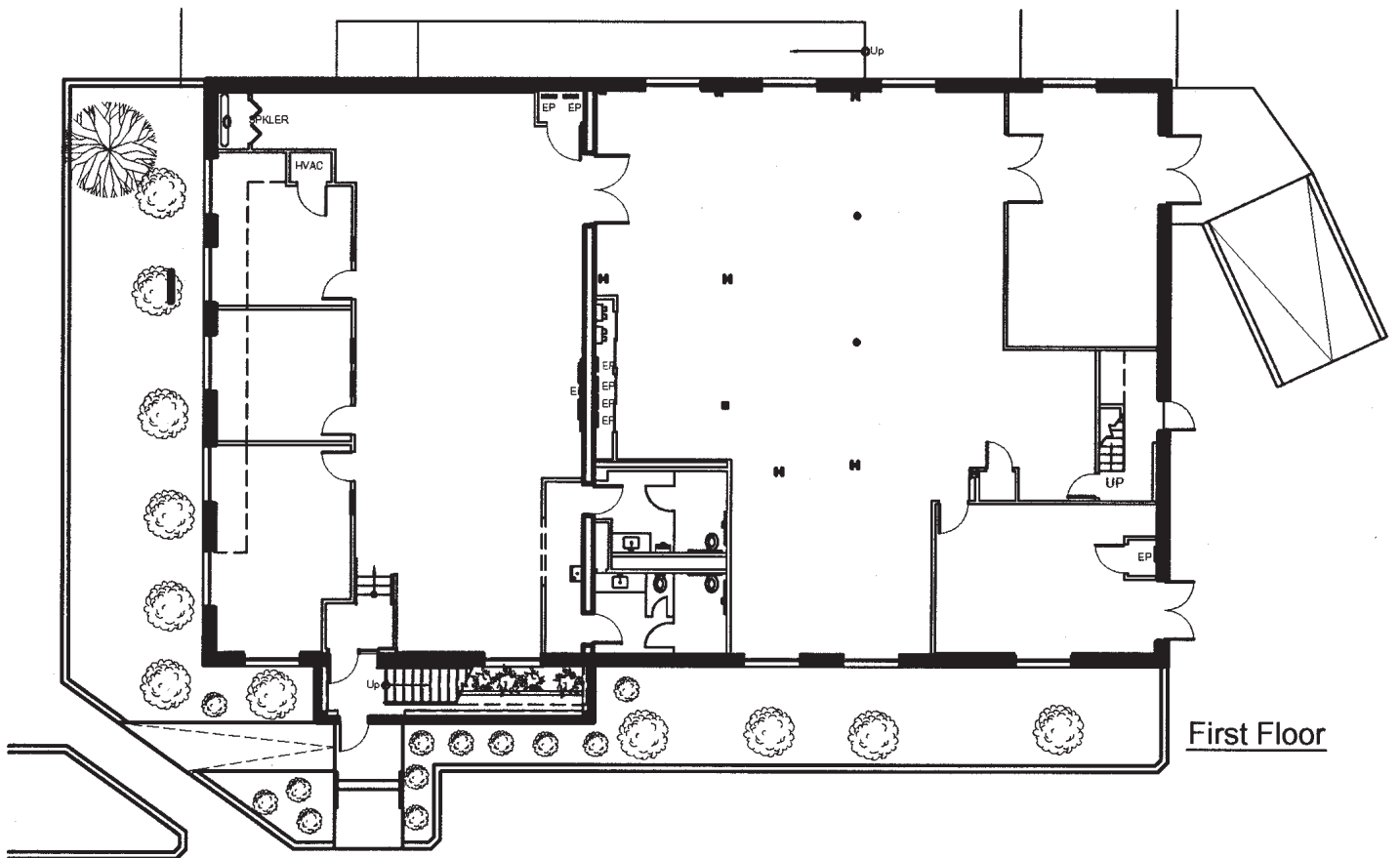
- Minutes from I-95
- 10 minutes to Boston/Cambridge
- Just off I-93 (Exit 36, Montvale Avenue)
- 20 Minutes to Waltham and Mass. Pike (I-90)
- Dozens of nearby retail services, restaurants, and hotels

Cummings Properties' highly experienced professionals assure quality building management including leasing, space planning, design, construction, and maintenance. Since 1970 this successful development and property management experience has earned Cummings Properties

its long-standing reputation for operational and service excellence. Call Eric Anderson at 781-932-7038 to schedule an appointment to visit this or any of our other fine properties.



Second Floor



First Floor